



Certificate of Analysis

CANNABUSINESS LABORATORIES, LLC

Customer:

Extract Wellness
1415 Bardstown Rd
Louisville, KY 40204

Sample ID **250217013**
Order Number **CB250217007**
Sample Name **51541 1500mg FS**

External Sample ID **51541 1500mg FS Base**

Received Date **2/18/2025**
COA Released **2/19/2025**

Batch Number **51541**

Comments

Product Type **Edible**
Sample Type **Edible**

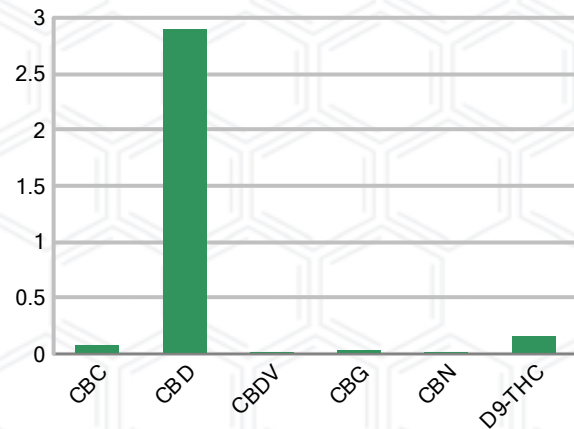
CANNABINOID PROFILE (Product Size = 1 mL)

Analyte	LOQ (%)	% Weight	mg/mL	mL/serving
CBC	0.01	0.075	0.699	0.70
CBD	0.01	2.898	26.95	26.95
CBDa	0.01	ND	ND	ND
CBDV	0.01	0.015	0.141	0.14
CBG	0.01	0.031	0.290	0.29
CBGa	0.01	ND	ND	ND
CBN	0.01	0.012	0.113	0.11
d8-THC	0.01	ND	ND	ND
d9-THC	0.01	0.155	1.445	1.45
THCa	0.01	ND	ND	ND
Total Cannabinoids		3.187	29.64	29.64
Total Potential THC		0.155	1.445	1.45
Total Potential CBD		2.898	26.95	26.95
Total Potential CBG		0.031	0.290	0.29
Ratio of Total Potential CBD to Total Potential THC				18.70 : 1
Ratio of Total Potential CBG to Total Potential THC				0.20 : 1

SAMPLE IMAGE



CANNABINOIDS % Weight



*Total Cannabinoids refers to the sum of all cannabinoids detected.

*Total Potential CBD = (0.877 x CBDa) + CBD. *Total Potential THC = (0.877 x THCa) + THC. *Total Potential CBG = (0.877 x CBGa) + CBG.

*Total Potential THC/CBD are calculated to take into account the loss of an acid group during decarboxylation.



J. Hobgood
Laboratory Manager
SIGNATURE

Jamie Hobgood
LABORATORY MANAGER

02/19/2025 10:47 AM
DATE

This product has been tested by CannaBusiness Laboratories using validated testing methodologies and a quality system. Values reported relate only to the product tested. CannaBusiness Laboratories makes no claims as to the efficacy, safety, or other risks associated with any detected or non-detected levels of any compounds reported herein. This Certificate shall not be reproduced except in full, without the written permission of CannaBusiness Laboratories. Photo is of sample received by the lab and may vary from final packaging. The results apply to the sample as received.





Certificate of Analysis

CANNABUSINESS LABORATORIES, LLC

Customer

Extract Wellness
1415 Bardstown Rd
Louisville, KY 40204



Sample Name: 51541 1500mg FS

Sample ID: 250217013

Order Number: CB250217007

Product Type: Edible

Sample Type: Edible

Received Date: 02/18/2025

Batch Number: 51541

COA released: 02/19/2025 10:47 AM

Potency (mg/mL)			
Date Tested: 02/19/2025		Method: CB-SOP-028	
Instrument:			
0.155 %	2.898 %	3.187 %	29.64 mg/mL
Total THC	Total CBD	Total Cannabinoids	Total Cannabinoids

Analyte	Result	Units	LOQ	Result	Units
CBC (Cannabichromene)	0.075	%	0.010	0.699	mg/mL
CBD (Cannabidiol)	2.898	%	0.010	26.95	mg/mL
CBDa (Cannabidiolic Acid)	ND	%	0.010	ND	mg/mL
CBDV (Cannabidivarin)	0.015	%	0.010	0.141	mg/mL
CBG (Cannabigerol)	0.031	%	0.010	0.290	mg/mL
CBGa (Cannabigerolic Acid)	ND	%	0.010	ND	mg/mL
CBN (Cannabinol)	0.012	%	0.010	0.113	mg/mL
D8-THC (D8-Tetrahydrocannabinol)	ND	%	0.010	ND	mg/mL
D9-THC (D9-Tetrahydrocannabinol)	0.155	%	0.010	1.445	mg/mL
THCa (Tetrahydrocannabinolic Acid)	ND	%	0.010	ND	mg/mL



J. Hobgood
Laboratory Manager

Jamie Hobgood

02/19/2025 10:47 AM

SIGNATURE

DATE

NT = Not tested, ND = Not detected; LOQ = Limit of Quantitation; <LOQ = Detected; >ULOL = Above upper limit of linearity; CFU/g = Colony forming units per 1 gram; TNTC = Too numerous to count

This product has been tested by CannaBusiness Laboratories using validated testing methodologies and a quality system. Values reported relate only to the product tested. CannaBusiness Laboratories makes no claims as to the efficacy, safety, or other risks associated with any detected or non-detected levels of any compounds reported herein. This Certificate shall not be reproduced except in full, without the written permission of CannaBusiness Laboratories. Photo is of sample received by the lab and may vary from final packaging. The results apply to the sample as received.